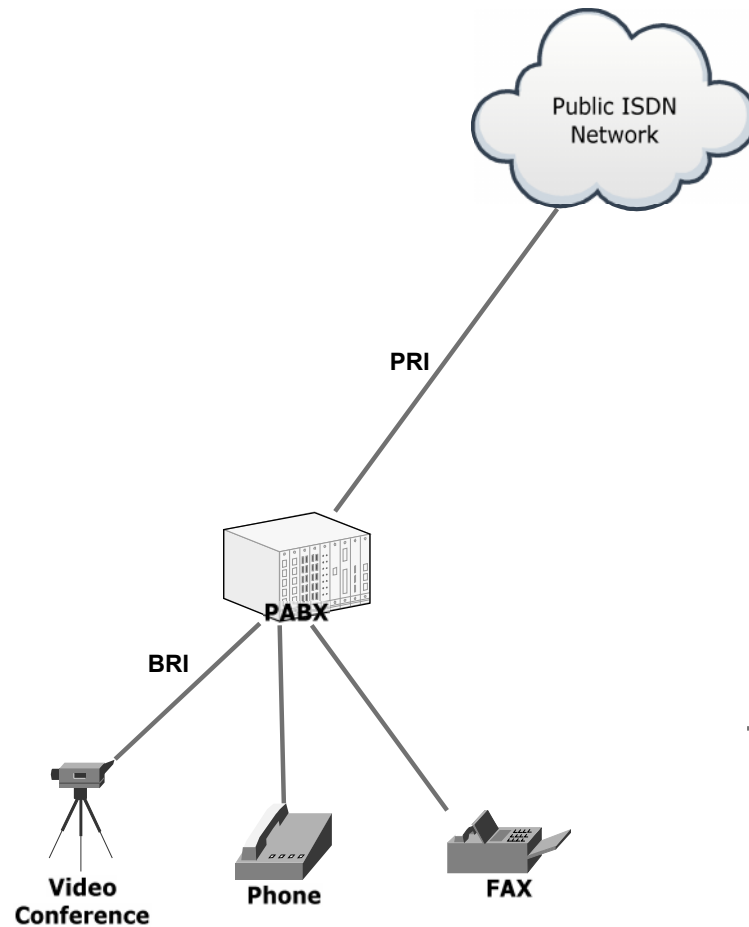




Migrating a legacy PABX to “all IP”

Making it less expensive, faster, simpler and  
lower risk

Patapsco Communications Ltd

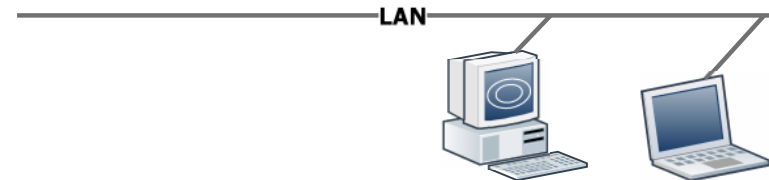


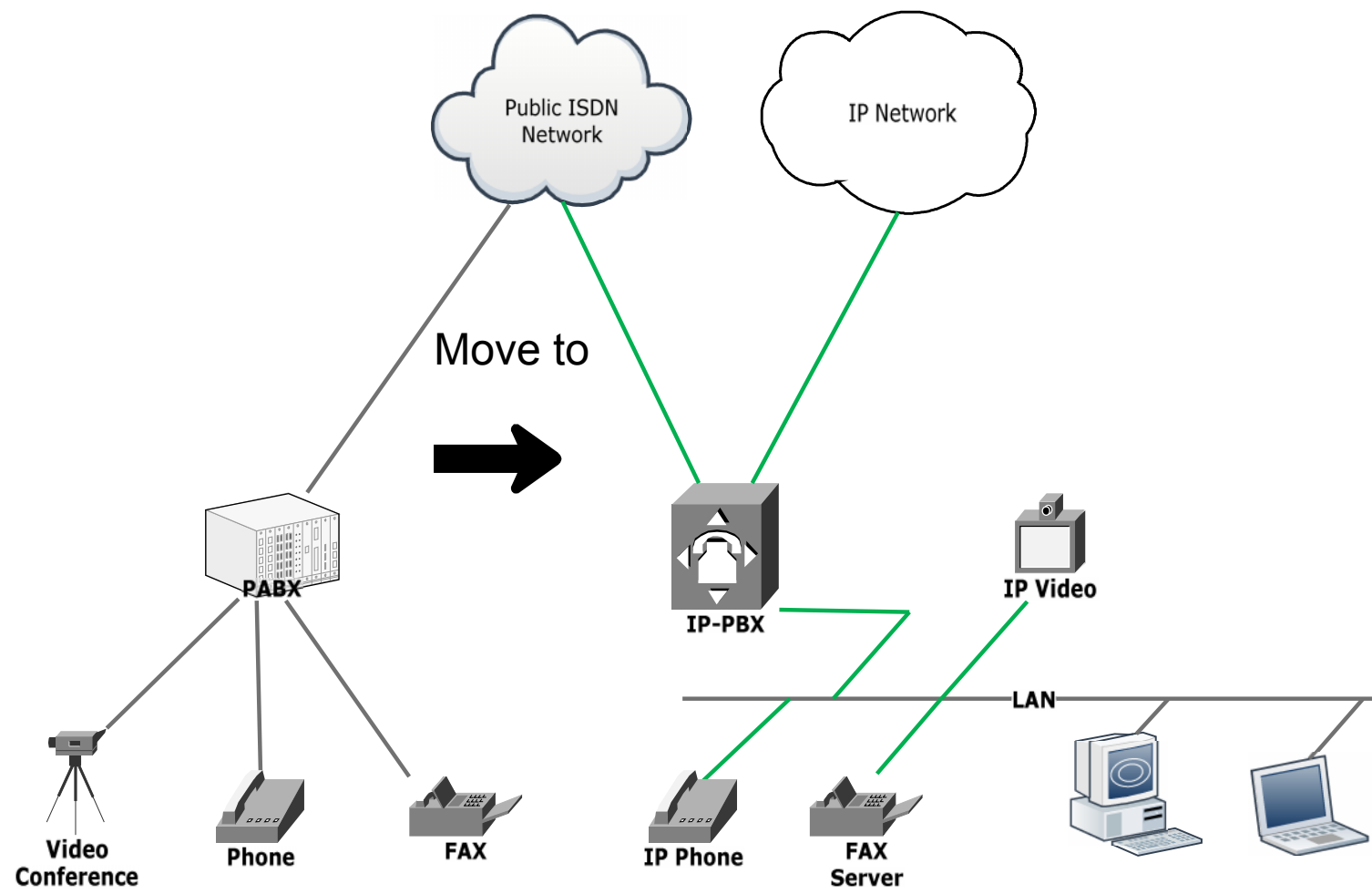
Separate voice and data networks

- Expensive

Numbering plans and routing embedded in old PABX

- Complex
- Difficult to maintain
- Limited and costly to expand/change





## Migration considerations:

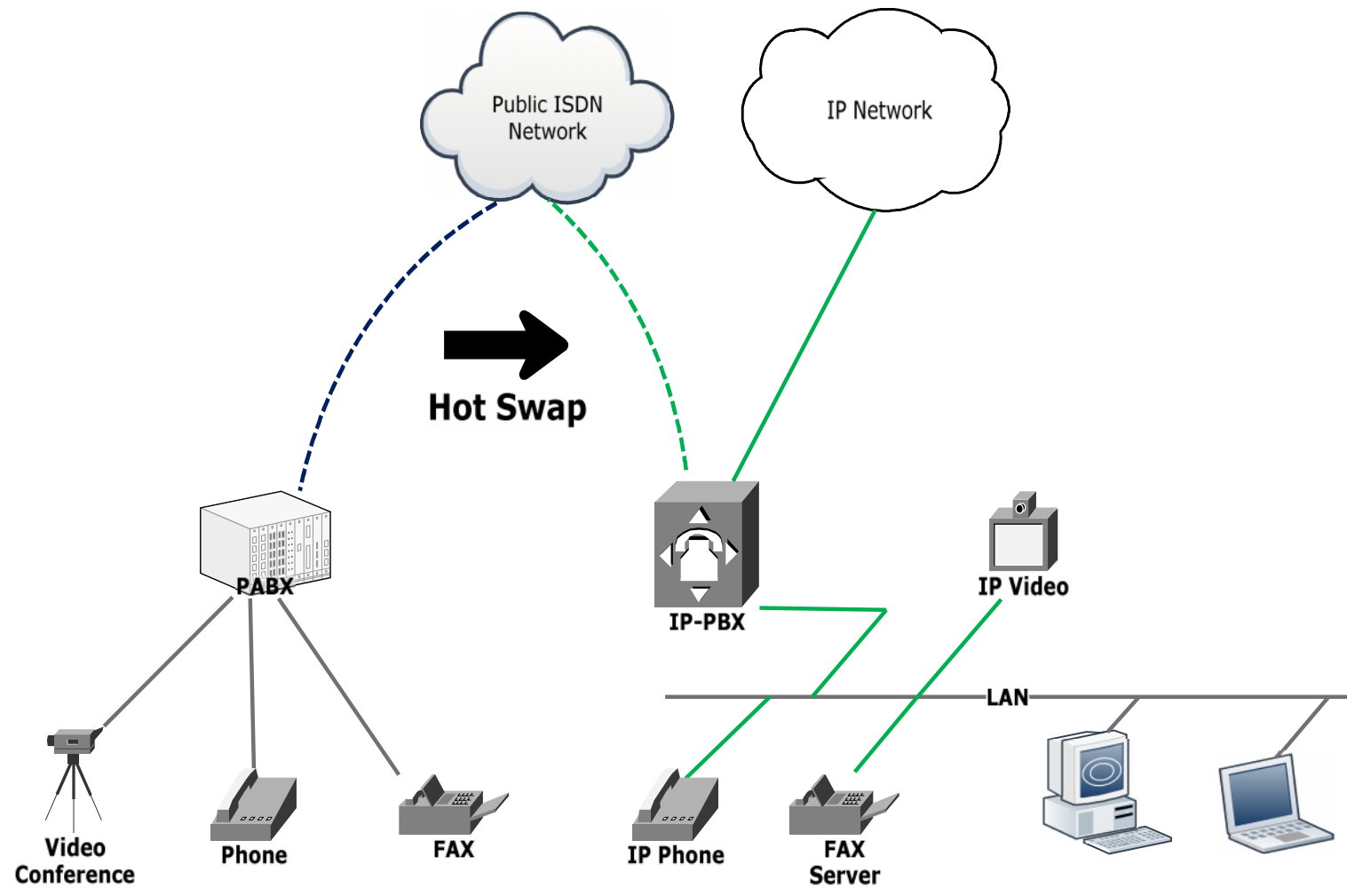
- Risk
- Involvement of legacy PABX maintainer
  - Motivation & commitment
  - Costs
  - Co-ordination
- Maintaining inter-connectivity during migration
- Timescales
- Minimising disruption
- Ongoing service quality

There are typically three transition options:

- 1. Hot swap
- 2. Staged migration
- 3. The “Liberator” migration

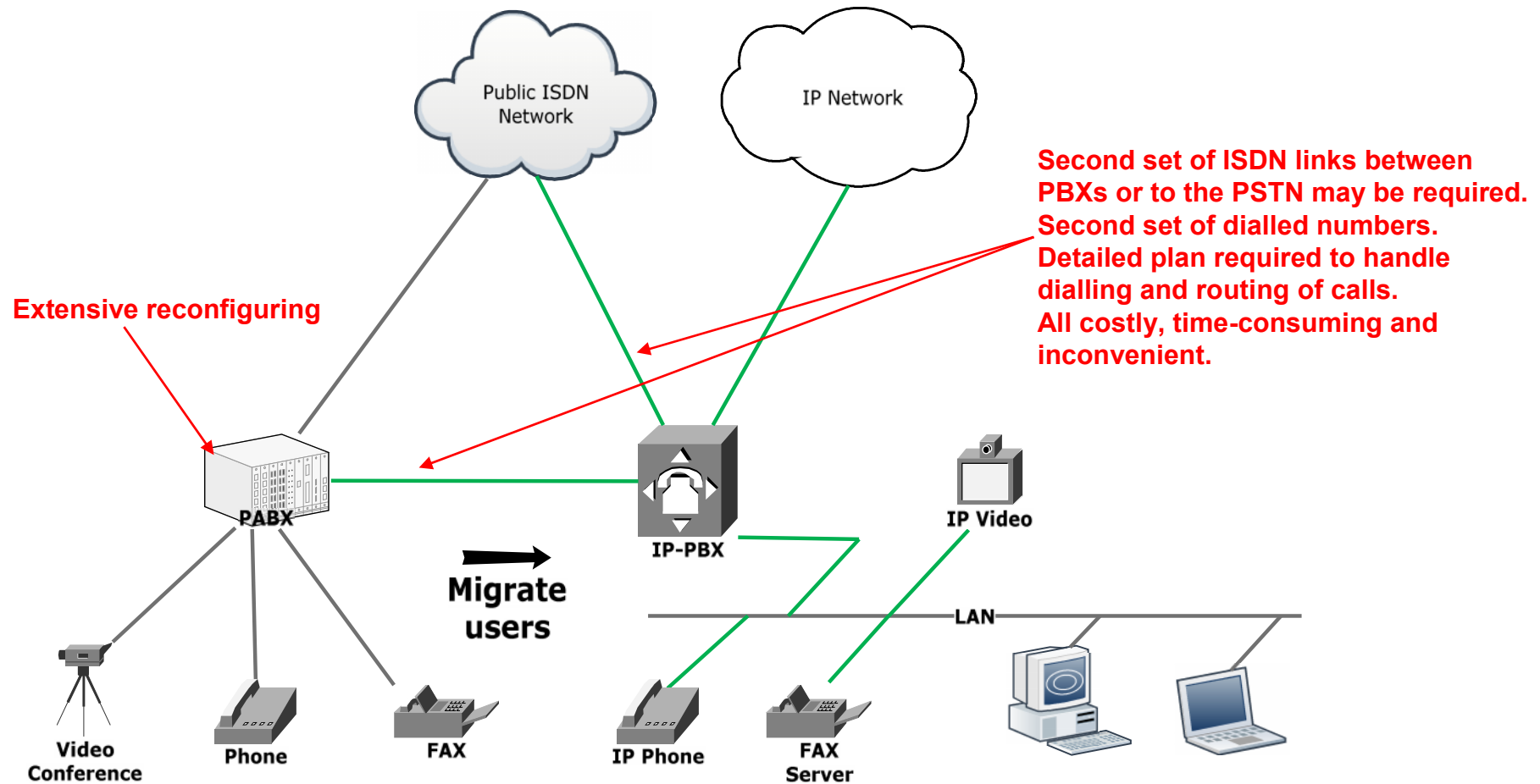
## 1. Hot swap

- Transfer the ISDN connection from the PABX directly to the IP-PBX
- Suits smaller enterprises (<20 users)
- Limited primary/secondary routing tables and numbering requirements
- Lowest cost option
- Often carried out over evening/weekend but can be risky



## Staged migration

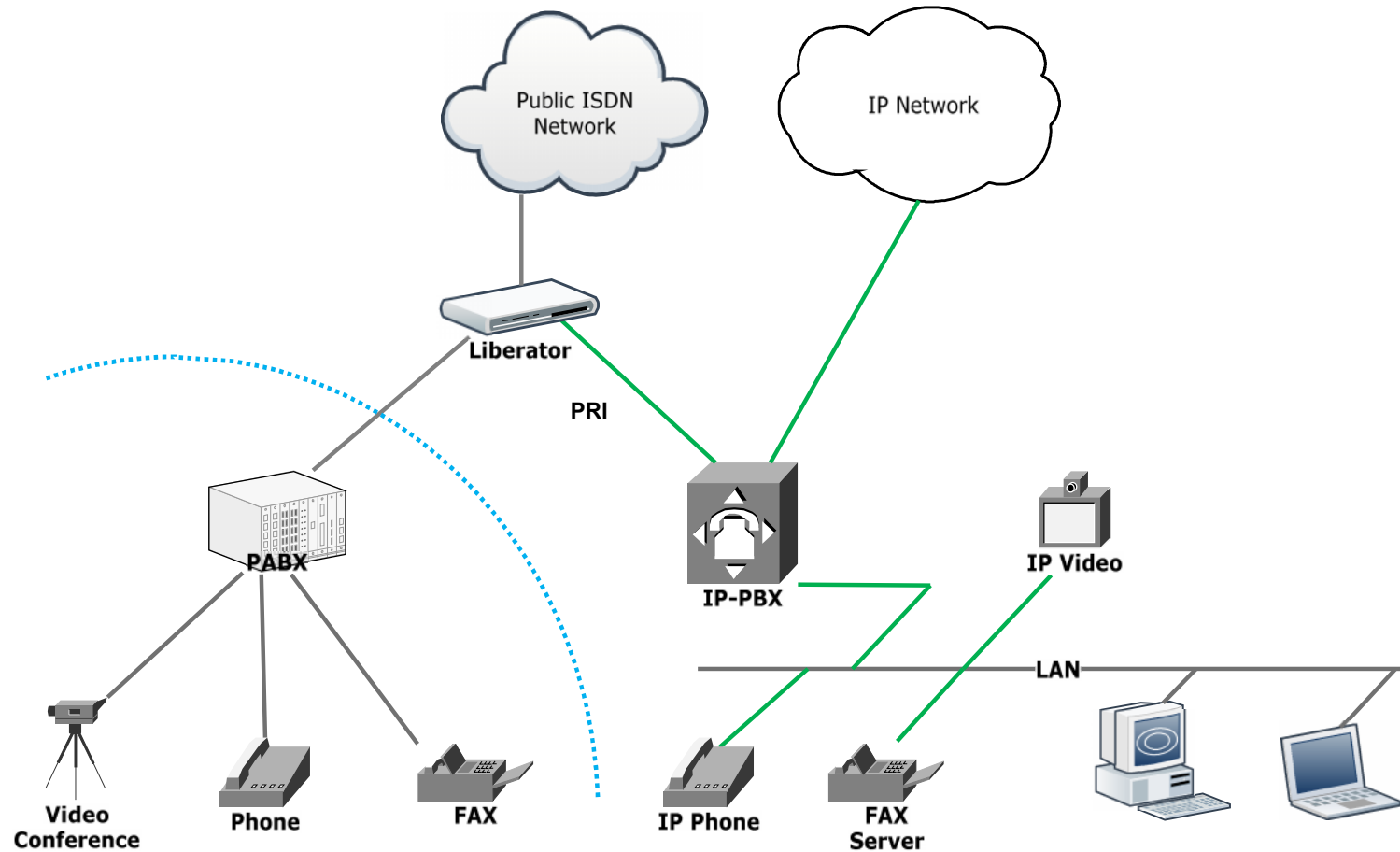
- Typically for medium/larger enterprises
- Migration may take weeks or months
- Most costly approach as either requires:
  - additional ISDN connections or
  - additional interfaces for PABX and IP-PBX
- Needs careful and detailed planning
- Large involvement of legacy PABX staff
  - cost
  - motivation
  - timescales
- High risk with large chance of delays and “issues”



Requires strong coordination of skilled PABX engineer and new system engineer to make system work well

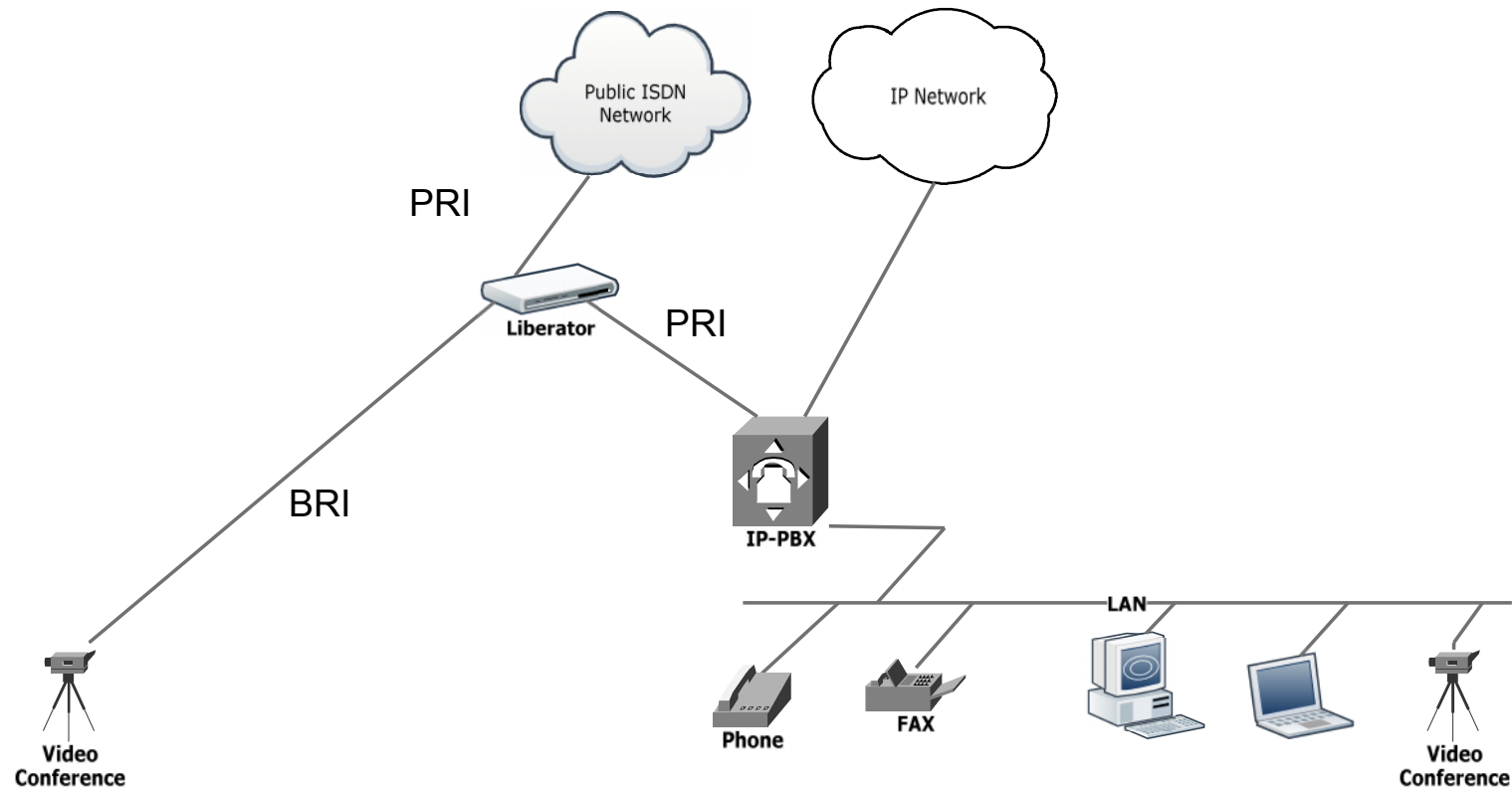
## The “Liberator” migration

- A flexible lower cost approach
- Liberator manages almost all the rerouting
- Minimises the costly, inconvenient and risky reprogramming of the existing PABX
- No unnecessary additional interface cards
- No new ISDN connections or numbering plan required
- Reconfigurations can be achieved remotely
- Continues to support the high quality ISDN BRI video conferencing facility



- Liberator provides fast and flexible routing of calls to minimise changes on the old PABX

### PABX Migration to Ip-PBX



- Liberator supports ISDN BRI Video Conferencing systems, not typically well-handled by IP-PABXs

## Why choose the “Liberator” migration

- Less expensive
  - Minimises the costly reprogramming of the existing PABX
  - No extra PRI links needed
  - Can all be achieved remotely
- Faster
  - Rerouting handled by the Liberator
- Simpler
  - Significantly reduce reliance on skilled PABX engineer
- Lower risk
  - Minimise changes to numbering plan and rerouting that may introduce errors or issues
- More flexible
  - Number conversion to help with number changes and re-routing

Patapsco can provide you and your team with valuable tools, and importantly a key differentiator in your sales, planning and installation processes

## Contact details

- Website: [www.patapsco.co.uk](http://www.patapsco.co.uk)
  - Brochures
  - Technical specs
  - Support Q&A
  - Applications
  
- Sales Contact Terry Preston
  - [terry@patapsco.co.uk](mailto:terry@patapsco.co.uk)
  - +44 1428 752 955