



PatapSCO's LanBand-1P and -2P

Products Overview

The LanBand allows any ISDN device to plug into the standard LAN Ethernet sockets in the building, campus or base and to access and share centrally located ISDN services.



Main Features:

- Service is transparent to all types of voice/data including video, PoS, modems and encryptors
- All ISDN interfaces are clock-clocked and synchronised to the PSTN clock from the carrier so no clock slips or data loss
- Signalling passed transparently
- Out-going calls can share the ISDN service or have dedicated resources
- In-coming calls are routed to the appropriate device based on dialled number
- Calls can be placed to other internal devices without going out to the PSTN
- Versions for PRI and BRI available
- Converts PRI to BRI as needed
- No more special cables being laid around the building
- No more ISDN cable driving distance issues
- One-time configuration
- No SIP server or other device needed
- LanBand gives complete flexibility on where you provide ISDN services

This version supports:

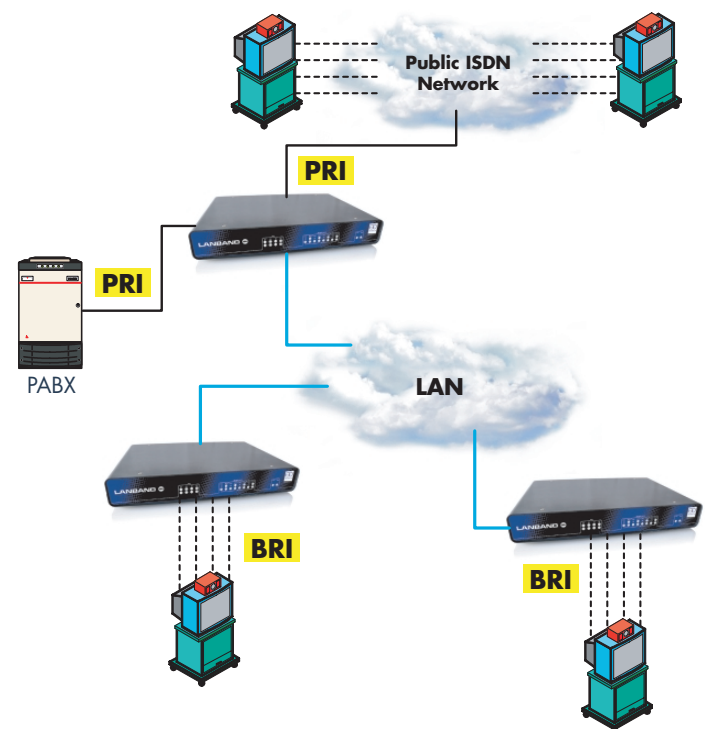
- 1 or 2 PRI ports
- NT or TE ports (able to connect to a network or to a local PRI device)
- ETSI Euro ISDN and USA ANSI ISDN supported

Application Example

The diagram below shows two BRI videoconference units sharing a PRI network port in the communications room. The PRI is also used by the PABX.

The internal VCs can call any remote unit or conference between themselves.

In-coming calls are routed to the PABX or correct VC based on dialled number (DDI/DID)





A single PRI unit is available for connection to the ISDN network if there is no requirement to share with the PABX.

The single PRI unit can also be located around the building for high-speed ISDN devices such as HD video.

See also the [Application Note](#)

Technical Feature Overview

- Support for 1 or 2 PBRIs
- User-switchable between NT or TE presentations
- ETSI (Euro Q.931) or ANSI (USA)
- Transparent to all data formats
- Each "B" channel within the PRI is treated individually
- All devices clock-locked/synchronised
- Compensates for jitter across the LAN (configurable)
- Automatically re-orders packets
- Can be the central LanBand with ISDN PSTN access
- Or can connect to a centralised LanBand
- Communicates with one other LanBand or with many LanBands
- Quality of Service options
- DbManager options for control & configuration

Technical Specifications:

PRI

- Available with 1 or 2 ports
- NT/TE presentation
- Straight cables
- Typical driving distance – 500m
- Support for A-Law to u-Law encoding for E1/T1 voice
- Support for A-Law and u-Law tones
- Overlap to En-bloc conversion

ETSI E1

- RJ45
- 1200ohm balanced
- G.703 HDB3 encoded
- Selectable CRC or CRC4
- ETSI-DSS1 (Euro-ISDN)
- ETSI Q.931/921
- ETSI 300-011 (Layer 1)
- ETSI 300-125 (Layer 2)
- ETSI 300-102 (Layer 3)
- Approved to TBR4

ANSI T1

- RJ45
- 1000ohm balanced
- ESF or D4 framing
- B8ZS or AMI framing
- NI-2 North American National
- DMS-100 and 5E%% variants
- AT&T TR-62411
- AT&T T1.403

Connectivity

- Establishes calls to/from one other LanBand
- Optionally able to support simultaneous connections with 2, 4, 8, 16 or 30 LanBands

Management

- Easy to use PC-based graphical manager
- Serial port
 - Asynch • 8 data, 1 stop bit, no parity • 19.2 to 115kbps
- Via LAN

Power

- Internal AC PSU
- Standard IEC connector
- 95-240VAC
- 47-63Hz
- Auto-sensing
- 15W
- Max consumption 0.2A RMS@230VAC

Mechanical

- Metal chassis
- 292w x 200d x 44h mm (1 rack unit)
- 1.1Kgms
- Optional rack mount kit
- Temp -20°C to +50°C
- Humidity 10-90% non-condensing
- RoHS compliant

Maintenance

- No serviceable parts
- Battery for real-time clock and NV ram typically 10 years
- No maintenance required

Firewalls and Gateways

- LanBand works across the same LAN Segment.
- If the ISDN traffic needs to cross Firewalls or Default Gateways see our PacketBand-ISDN range which has the same distributed capabilities but with more sophisticated Ethernet routing and NATing options.
- The PacketBand-ISDN also has support for more PRI ports.

There are versions of LanBand which support BRI services.

All details subject to change without notification E&OE

© PatapSCO Designs Ltd 2009 and MediaBand © is a registered Trademark of PatapSCO Designs Ltd. PatapSCO reserve the right to change any specification without notice. V1.1



PatapSCO Communications,

Passfield Oak, Passfield, Near Liphook, Hampshire, GU30 7RL England

Tel: +44 (0) 1 428 752900 Fax: +44 (0) 1 428 752901 info@patapSCO.co.uk www.patapSCO.co.uk