



# PatapSCO's LanBand-4B & LanBand-8B

## Products Overview

**The LanBand transports and switches ISDN services across a LAN. Access and share centrally located carrier delivered ISDN from any Ethernet socket in the building.**



### Main Features:

- Service is transparent to all types of voice/data including video, PoS, modems and encryptors
- All ISDN interfaces are clock-clocked and synchronised to the PSTN clock from the carrier so no clock slips or data loss
- Signalling passed transparently
- Out-going calls can share the ISDN service or have dedicated resources
- In-coming calls are routed to the appropriate device based on dialled number
- Calls can be placed to other internal devices without going out to the PSTN
- Versions for PRI and BRI available
- Converts PRI to BRI as needed
- No more special cables being laid around the building
- No more ISDN cable driving distance issues
- One-time configuration
- LanBand gives complete flexibility on where you provide ISDN services

### This version supports:

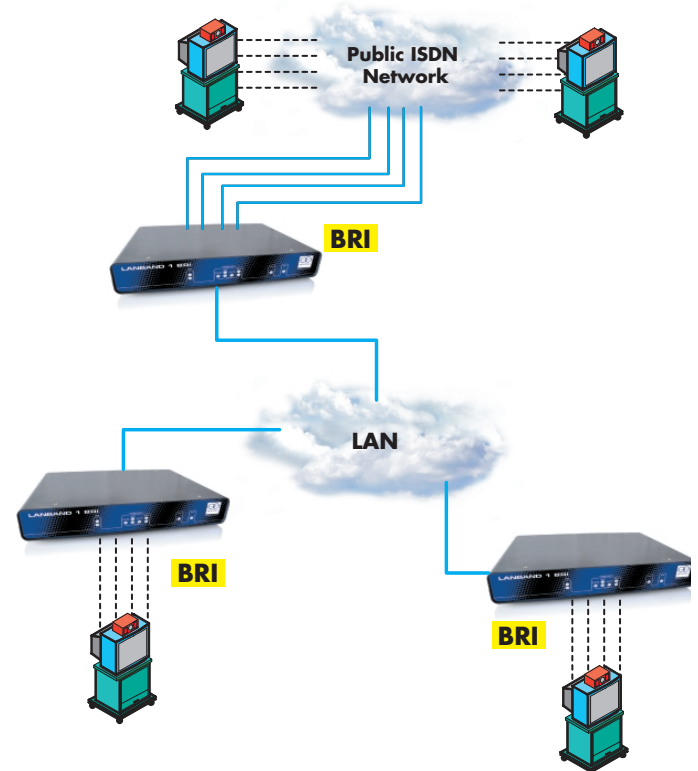
- 4 or 8 BRI ports
- "S" 4-wire interface
- NT ports (looks like a carrier delivered ISDN service)
- ETSI Euro ISDN and USA ANSI ISDN supported

### Application Example

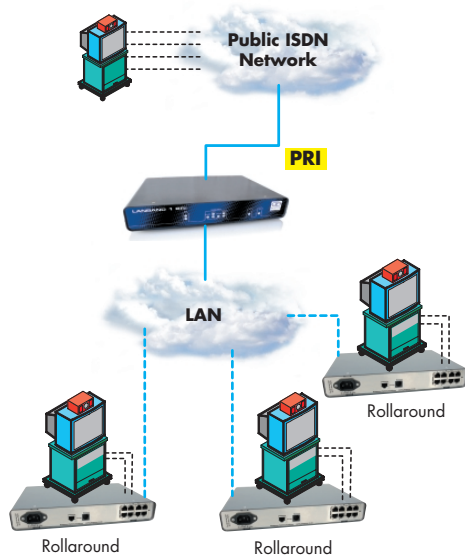
The diagram below shows two videoconference units sharing BRI ports located in the communications room. The internal VCs can call any remote unit or conference between themselves.

In-coming calls are routed to the correct VC based on dialled number (DDI/DID)

See the [Application Note](#)



The illustration below shows three BRI VCs sharing PRI ISDN access to the network.



The LanBands in the diagram are located on the VC trolley or "roll-around" giving complete flexibility on where the conference is held – just plug LanBand into the nearest LAN socket on the wall.

### Technical Feature Overview

- Support for 4 or 8 BRI's
- "S" 4-wire NT presentation
- ETSI (Euro Q.931) or ANSI (USA)
- Transparent to all data formats
- Each "B" channel treated individually
- All devices clock-locked/synchronised
- Compensates for jitter across the LAN (configurable)
- Automatically re-orders packets
- Connect to a centralised LanBand
- Optionally will inter-work with many LanBands
- Quality of Service options
- DbManager options for control & configuration

### Technical Specifications:

#### BRI

- Available with 4 or 8 ports
- NT presentation
- Straight cables
- Typical driving distance – 500m
- Support for A-Law to u-Law encoding for E1/T1 voice
- Support for A-Law and u-Law tones
- Overlap to En-bloc conversion
- Support for dual TELs

All details subject to change without notification E&OE  
 © Patapsco Designs Ltd 2009 and MediaBand ® is a registered Trademark of Patapsco Designs Ltd. Patapsco reserve the right to change any specification without notice. V1.1

#### ETSI

- RJ45
- "S" 4-wire
- Point-to-Point and Multipoint
- ETSI-DSS1 (Euro-ISDN)
- ETSI Q.931/921
- ETSI 300-011 (Layer 1)
- ETSI 300-125 (Layer 2)
- ETSI 300-102 (Layer 3)

#### ANSI

- RJ45
- "S" 4-wire
- Support for SPIDs and Auto-SPID
- NI-1 North American National
- DMS-100 and 5E%% variants
- AT&T TR-62411
- AT&T T1.403

#### Connectivity

- Establishes calls to/from one other LanBand
- Optionally able to place simultaneous calls to many LanBands Management
- Easy to use PC-based graphical manager
- Serial port
  - Asynch • 8 data, 1 stop bit, no parity • 19.2 to 115kbps
- Via LAN

#### Power

- Internal AC PSU
- Standard IEC connector
- 95-240VAC
- 47-63Hz
- Auto-sensing
- 1.5W
- Max consumption 0.2A RMS@230VAC

#### Mechanical

- Metal chassis
- 292w x 200d x 44h mm (1 rack unit)
- 1.1Kgms
- Optional rack mount kit
- Temp -20°C to +50°C
- Humidity 10-90% non-condensing
- RoHS compliant

#### Maintenance

- No serviceable parts
- Battery for real-time clock and NV ram typically 10 years
- No maintenance required

#### Firewalls and Gateways

LanBand works across the same LAN Segment. If the ISDN traffic needs to cross Firewalls or Default Gateways see our [PacketBand-ISDN range](#) which has the same distributed capabilities but with more sophisticated Ethernet routing and NATing options.

There are versions of LanBand which support PRI services, both to the carrier network and to local PRI devices.